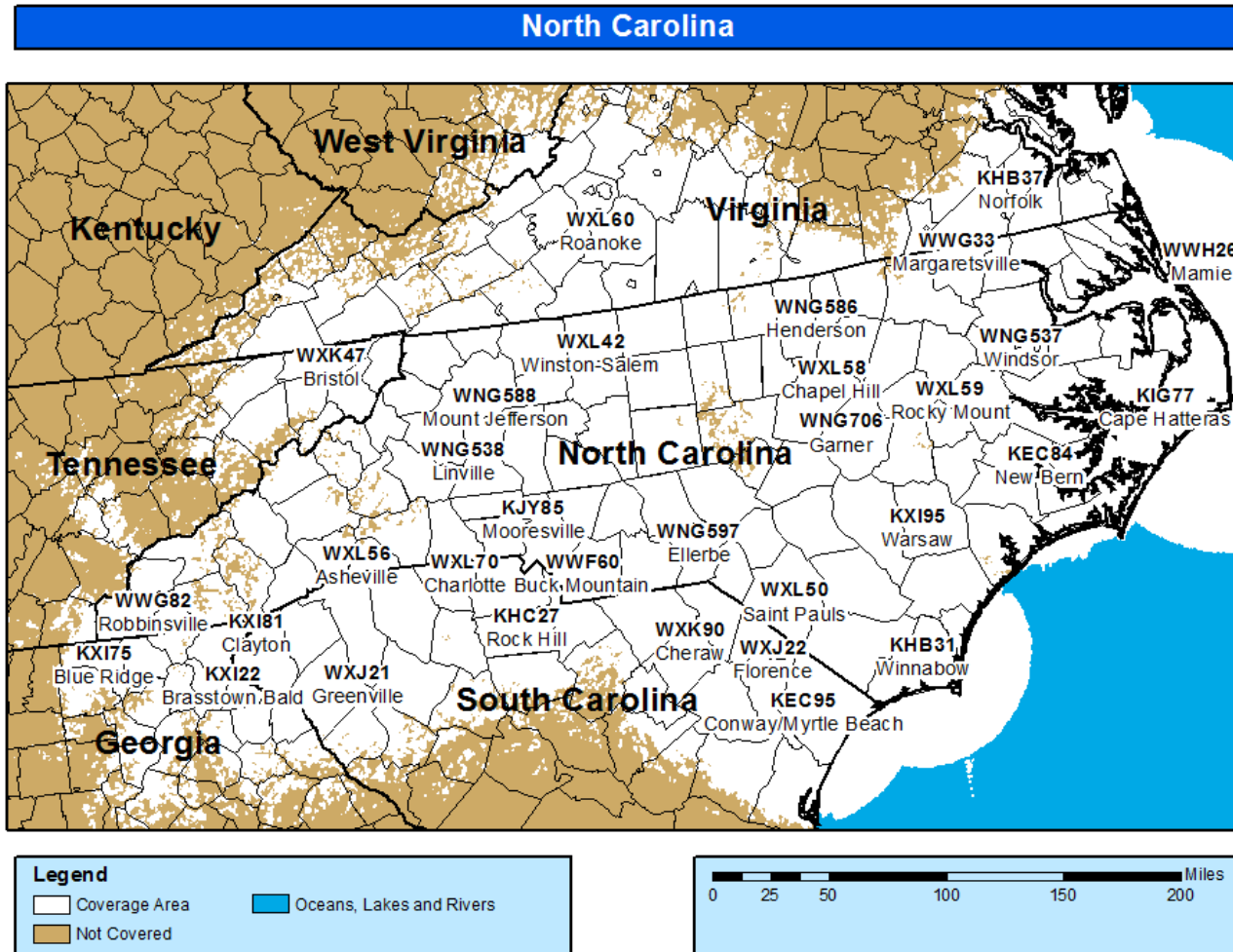


NOAA Weather Radio NC Coverage Map

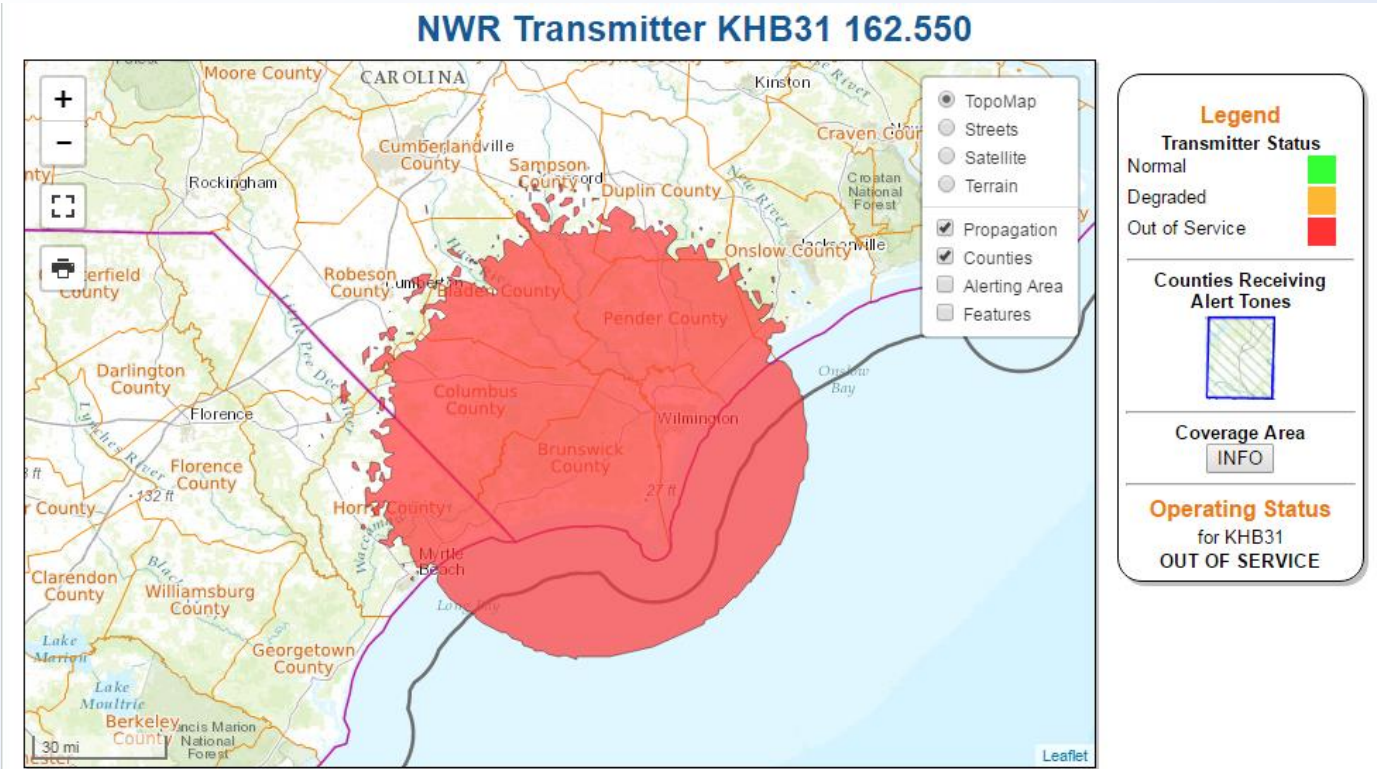


Weather Forecast Office
Wilmington, NC

weather.gov/ilm | [@NWSWilmingtonNC](https://twitter.com/NWSWilmingtonNC)



Winnabow, NC – Transmitter Propagation Map



Transmitter Details	
Call Sign	KHB31
Transmitter	Winnabow
Frequency	162.550
State	North Carolina
Site Location	Winnabow, NC
Operating Status	OUT OF SERVICE

KHB31 Counties Receiving Alert Tones		
COUNTY	STATE	SAME
Bladen	North Carolina	037017
Brunswick	North Carolina	037019
Columbus	North Carolina	037047
New Hanover	North Carolina	037129
Pender	North Carolina	037141

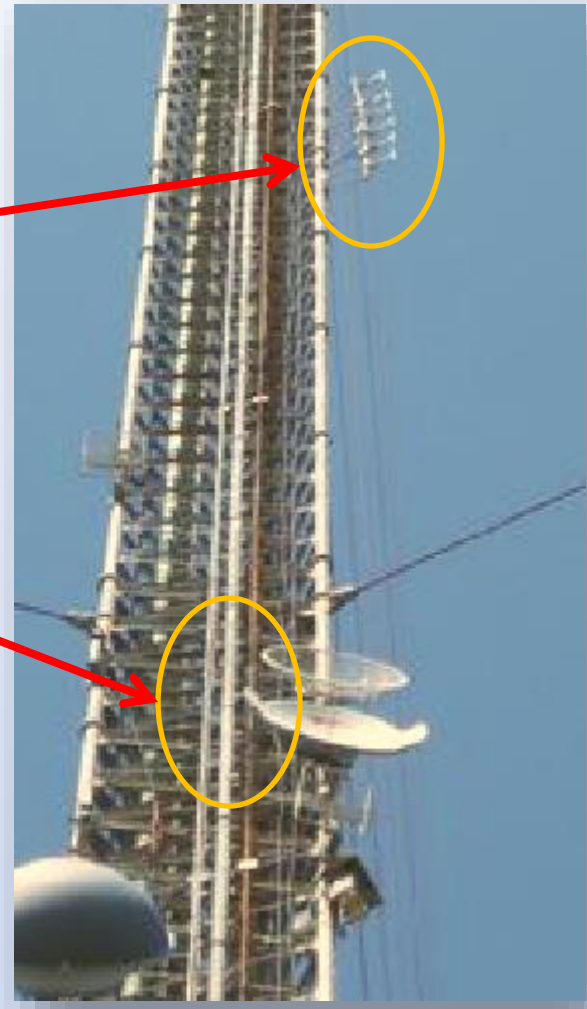
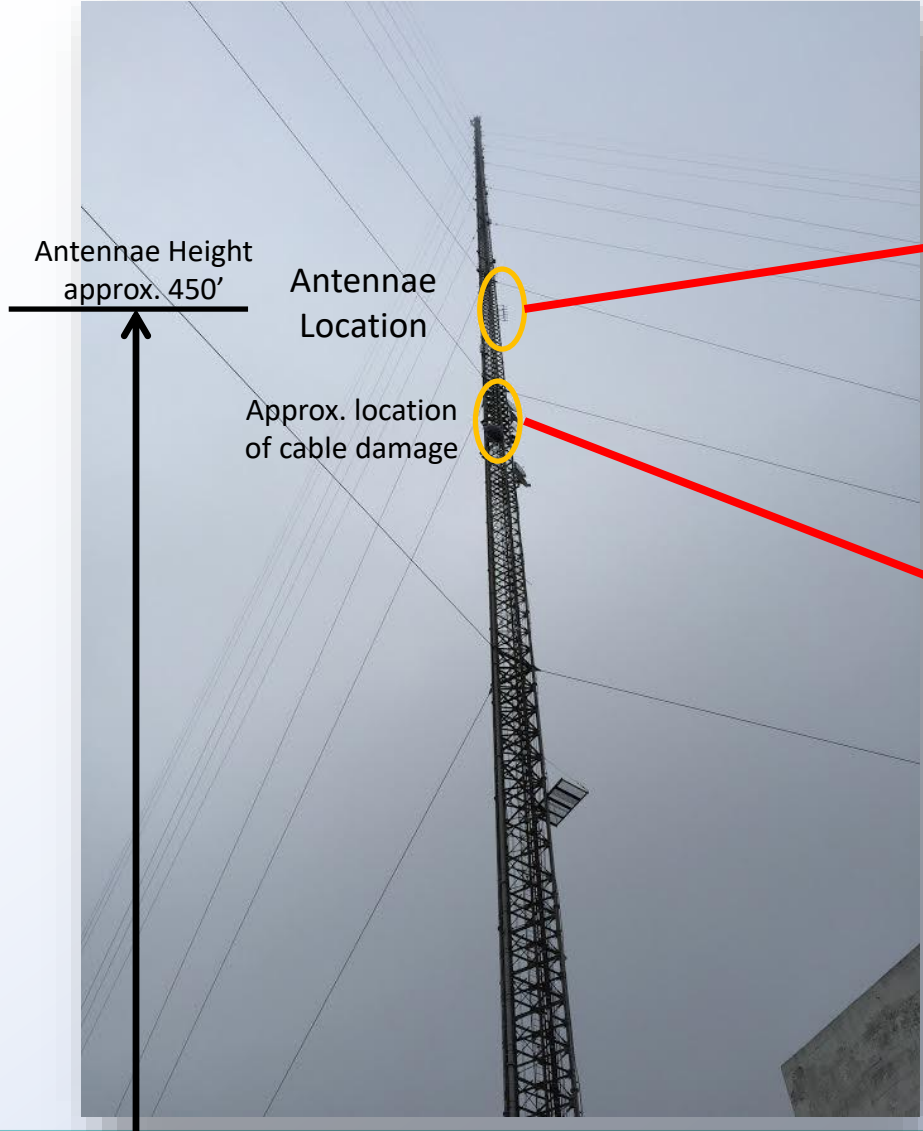


Weather Forecast Office
Wilmington, NC

weather.gov/ilm | @NWSWilmingtonNC



Winnabow, NC NOAA Weather Radio (KHB-31)



Weather Forecast Office
Wilmington, NC

weather.gov/ilm | [@NWSWilmingtonNC](https://twitter.com/NWSWilmingtonNC)



Other Sources for the latest weather information



Other sources for the latest severe weather information:

- 1) Visit our website, www.weather.gov/ilm
- 2) Local TV and National TV outlets
- 3) Your smartphone – see link provided for Wireless Emergency Alerts (WEA) information (*link provided in post*):
<http://www.nws.noaa.gov/com/weatherreadynation/wea.html>
- 4) Social Media – Twitter (@NWSWilmingtonNC)

If you know someone who relies on receiving severe weather warnings via the radio, pass this information along to them!



Key Points

- Hurricane Matthew likely caused some of the initial damage, while the recent winter weather event caused the failure.
 - Possible damage to the antennae (at 450' on the tower)
 - Significant damage to a part of the antennae cable 200' below the antennae
- The last major issue at the Winnabow transmitter occurred in 2003. The transmitter was originally commissioned on March 30, 1983)
- Similar outages to other NOAA Weather Radio transmitters took 4 to 6 months to repair.
- Must follow government procurement process.
 - Repair analysis needs to be completed
 - Proper bid process for the repair needs to be completed
 - Wind load analysis of the tower for any new equipment needed
- Ultimately, an upgraded cable will be installed along with an updated antennae.
- Must make sure the repairs are not rushed, are properly coordinated with the tower owners, and installed with a high level of quality which will insure the new antennae/cable last another 20 yrs.
- In the event of a **Tornado Warning, Tornado Watch, Flash Flood Warning, Hurricane Warning, or Civil Emergency Message** NWS staff will contact our LP1 (WMNX) and LP2 (WRMR) stations to activate EAS.

