

# Pender County 2019 Tropical Update

May 2, 2019

Disturbance #1





# Two-Day Graphical Tropical Weather Outlook

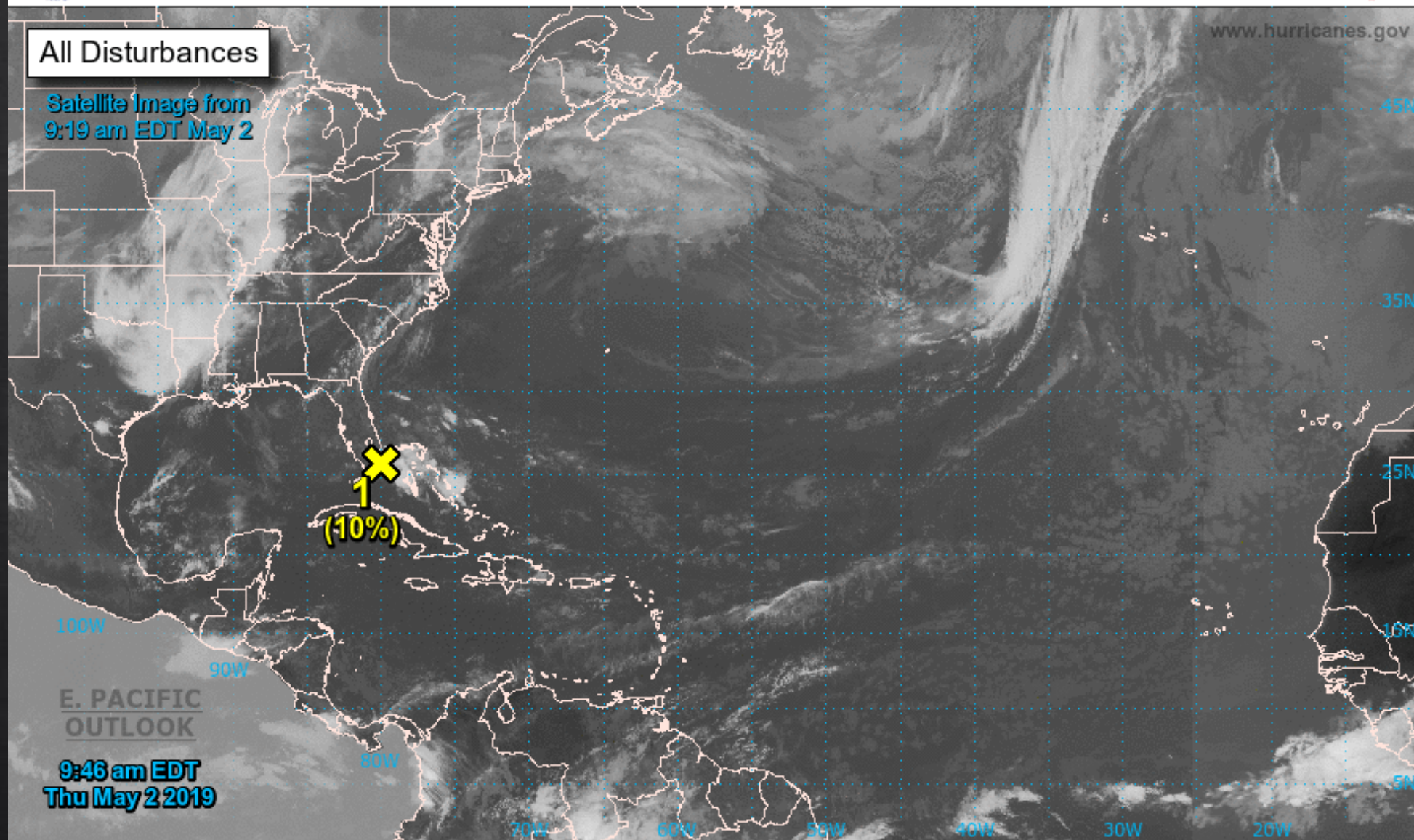
National Hurricane Center Miami, Florida



www.hurricanes.gov

All Disturbances

Satellite Image from  
9:19 am EDT May 2



E. PACIFIC  
OUTLOOK

9:46 am EDT  
Thu May 2 2019

Current Disturbances and Two-Day Cyclone Formation Chance:    < 40%    40-60%    > 60%

Tropical or Sub-Tropical Cyclone:    Depression    Storm    Hurricane

Post-Tropical Cyclone or Remnants



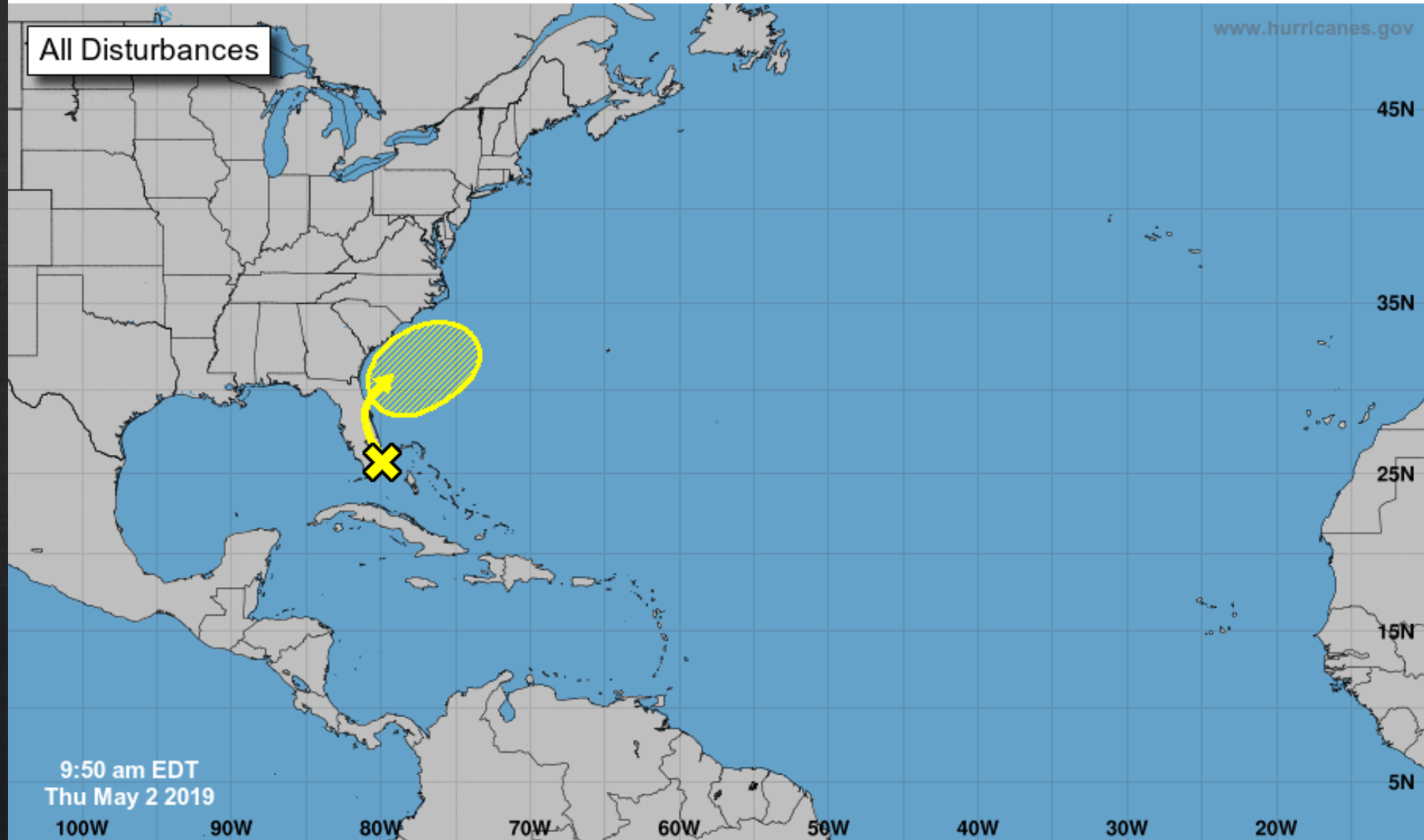
# Five-Day Graphical Tropical Weather Outlook

National Hurricane Center Miami, Florida



[www.hurricanes.gov](http://www.hurricanes.gov)

All Disturbances



9:50 am EDT  
Thu May 2 2019

Current Disturbances and Five-Day Cyclone Formation Chance:    < 40%    40-60%    > 60%  
Tropical or Sub-Tropical Cyclone:    Depression    Storm    Hurricane  
 Post-Tropical Cyclone or Remnants

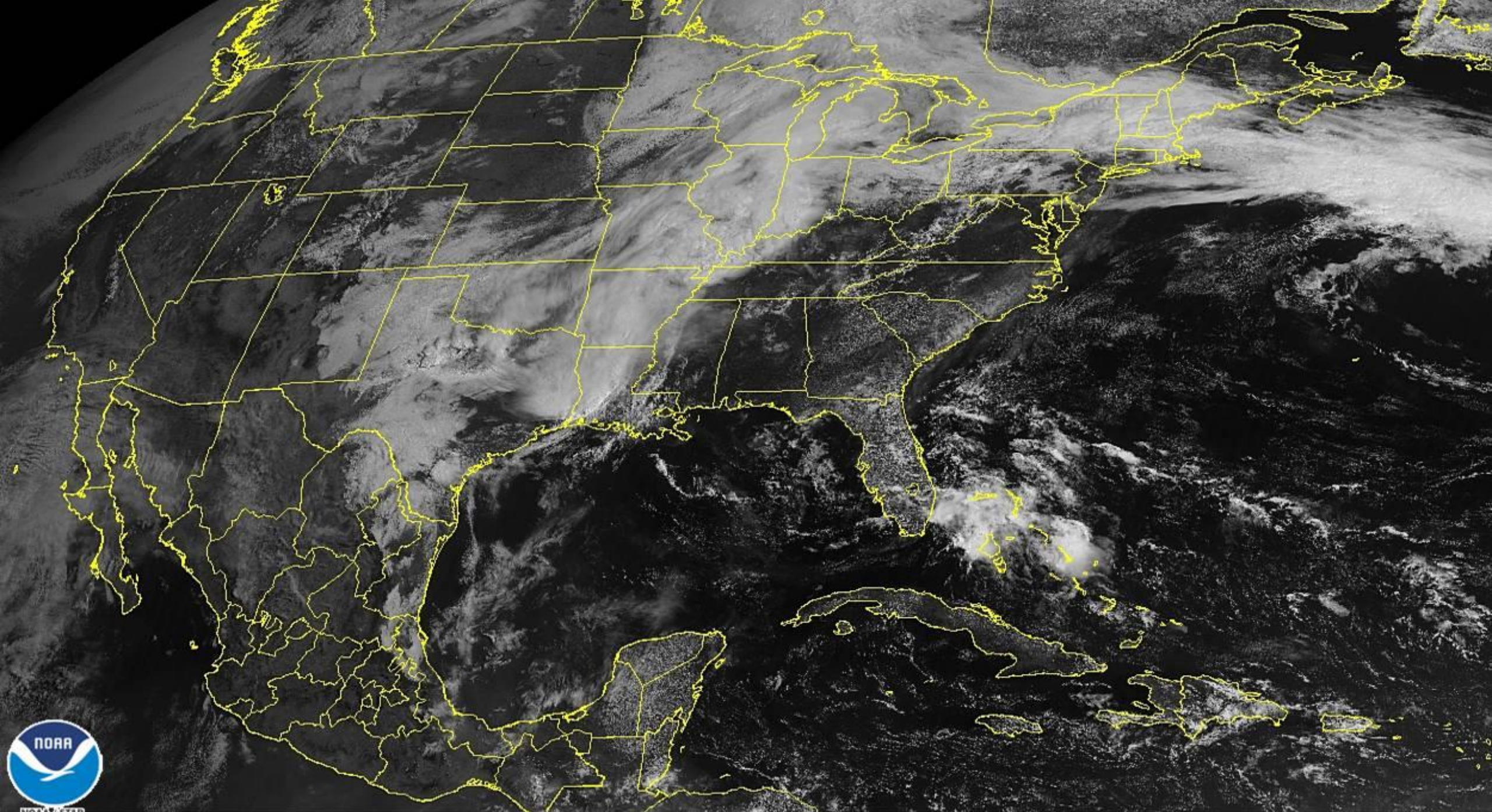


Special Tropical Weather Outlook  
NWS National Hurricane Center Miami FL  
950 AM EDT Thu May 2 2019

For the North Atlantic...Caribbean Sea and the Gulf of Mexico:

1. A trough of low pressure that extends from South Florida northeastward over the western Atlantic for a few hundred miles is producing disorganized shower and thunderstorm activity. Environmental conditions are not expected to be conducive for significant development of this system while it moves northwestward, and then northward over the Florida peninsula and near the southeast United States coast during the next day or so. This system is forecast to merge with a frontal system later this weekend. Regardless of development, locally heavy rains are possible over portions of the Bahamas and the Florida peninsula during the next day or so. The next Special Tropical Weather Outlook will be issued by 10 AM EDT Friday, or sooner if conditions warrant.
  - \* Formation chance through 48 hours...low...10 percent.
  - \* Formation chance through 5 days...low...10 percent.





02 May 2019 14:31Z NOAA/NESDIS/STAR GOES-East Band 02