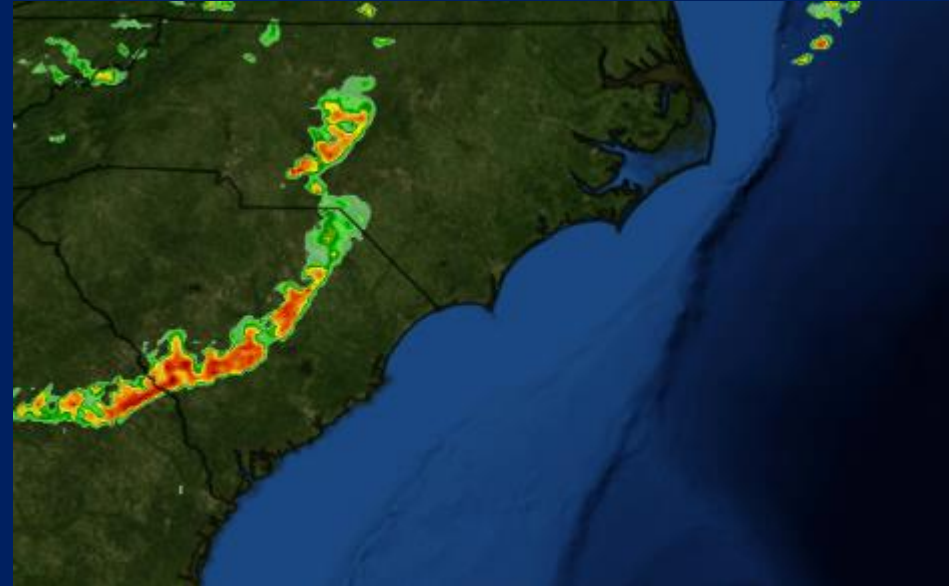


# Strong to Severe Thunderstorms Inland Thursday night



Slight Risk of Severe Storms Favored  
Near the I-95 Corridor After Nightfall



A model simulation of the storms  
10 pm Thursday evening, shows a broken  
but organized line of showers and strong storms

**Primary Threat** : Straight-line, damaging wind gusts up to 65 mph.

An updated briefing later today, will likely bring additional detail on timing and strength of this system

