



PENDER COUNTY EMERGENCY MANAGEMENT

SITUATION REPORT – #20

HURRICANE FLORENCE

WEDNESDAY OCTOBER 3, 2018

CURRENT WEATHER: HIGH 87 / LOW 67 MOSTLY SUNNY WITH A SOUTHEAST WIND AT 5 MPH.
HUMIDITY 82%

PREDICTED WEATHER: HIGH 89/ LOW 70 SUNNY WITH A WEST WIND 5-7 MPH

EOC: ACTIVATED AND CONTINUING 24 HOUR OPERATIONS

FATALITY: FOR THE REPORTING PERIOD THERE HAVE BEEN NO FATALITIES.

SHELTER OPERATIONS: SHELTERS HAVE BEEN CONSOLIDATED TO PENDER HIGH AND CENSUS IS DECLINING

SHELTER NAME	CAPACITY POST-STORM	CURRENT USAGE
BURGAW MIDDLE (Pet Only)		
PENDER HIGH	1450	77

EVACUATIONS/CURFEWS: THERE ARE NO MANDATORY EVACUATIONS.

PENDER COUNTY HAS A MANDATORY CURFEW FROM 9PM-7AM FOR THE BLACK RIVER AND NORTHEAST CAPE FEAR AREAS AND THE TRIBUTARIES, CREEKS AND STREAMS.

LAW ENFORCEMENT: NORMAL LAW ENFORCEMENT ACTIVITY IS OCCURRING. THE SHERIFFS OFFICE IS RESPONDING TO CALLS FOR ASSISTANCE, WELFARE AND ASSISTING IN SEARCH AND RESCUE. NON-EMERGENCY CALLS SHOULD GO TO 910.259.1212

EMS & FIRE: EMS AND FIRE ARE FOLLOWING NORMAL OPERATIONS. ALL OUTSIDE RESOURCES HAVE BEEN RELEASED.

COMMUNICATIONS: MAIN 911 AT NORMAL STAFFING LEVELS.

UTILITIES: FOUR COUNTY ELECTRIC MEMBERSHIP CORP IS REPORTING 102 OUT OF 8960 CUSTOMERS WITH OUTAGES. DUKE ENERGY PROGRESS IS REPORTING 1 OUT OF 17410 CUSTOMERS WITH OUTAGES.

ROADS EFFECTED: NCDOT IS REPORTING MANY ROADS CLOSED DUE TO DEBRIS AND FLOODING. MAJOR ROADS NC53, NC210, US 421 (SOUTH FROM WILMINGTON) AND NC410 ARE NOT PASSABLE AT THIS TIME. AS WATER LEVELS RECEDE NCDOT HAVE FOUND WASHED OUT ROADS AT 53 WEST AND 210 NEAR MOORES CREEK. I40 IS OPEN BOTH LANES EASTBOUND AND WESTBOUND. US 117 IS OPEN.

OTHER: PENDER MEMORIAL HOSPITAL IS OPEN.

Surf City and Topsail Beach: PROPERTY OWNERS, RESIDENTS, LICENSED CONTRACTORS AND INSURANCE ADJUSTERS ONLY ARE ALLOWED TO RE-ENTER THE ISLAND. THERE IS A MANDATORY CURFEW IN PLACE FROM 11PM TO 7AM.

Damage Assessment: TEAMS ARE CONTINUING RAPID ASSESSMENT OF HURRICANE DAMAGE. ACCESS TO MANY PARTS OF THE COUNTY ARE NOT POSSIBLE. STRUCTURES HAVE BEEN ASSESSED WITH THE FOLLOWING

DAMAGE BEING REPORTED:

2484- AFFECTED HABITABLE

1002 – MINOR

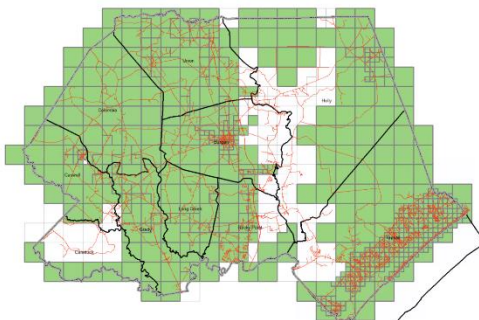
96– DESTROYED

300 - MAJOR

TOTAL # OF DAMAGED STRUCTURES – 3882

TOTAL STRUCTURES 34545

THE MAP BELOW IS A VISUAL REPRESENTATION OF THE COMPLETED AREAS OF DAMAGE ASSESSMENTS. AREAS IN GREEN ARE COMPLETED.



Points of Distribution: POINTS OF DISTRIBUTION ARE RESOURCE DISTRIBUTION AREAS DESIGNATED TO PROVIDE GOODS TO THE PUBLIC DEALING WITH THE EFFECTS OF HURRICANE FLORENCE. AT THE TIME OF THIS REPORT ALL POD LOCATIONS ARE REPORTING TO BE OPEN WITH AVAILABLE SUPPLIES. THE FOLLOWING SITES HAVE BEEN SET UP ACROSS THE COUNTY PROVIDING ACCESS TO THESE GOODS:

POD TRACKER

POD Identifier	POC	Contact	Address	OPEN/AWAITING SUPPLIES/CLOSED
Warehouse	Hagen Blake	910-641-1441	1830 Carver Dr, Rocky Point	CLOSED
Joint County/Non Governmental Distribution Centers (FOOD, WATER, CLEANING SUPPLIES, TOILETRIES, TARPS)				
Union Rescue	Diane Giddeons	910-282-7479	89 Veach Street Willard, NC 28478	CLOSED
Maple Hill POD	Harold Montley	910-231-4618	Maple Hill VFD 115 Old Maple Hill Rd N Maple Hill, NC 28454	CLOSED.
Shiloh POD	William Rossell	910-789-1871	Shiloh VFD 19170 US HWY 421 Watha, NC 28478	CLOSED
Lighthouse Church POD	Jeff Daw	910-540-8570	Lighthouse Church 98 South Trade Way Rocky Point, NC 28457	Lighthouse hours of distribution this week, are by appointment, 3-6 pm. and meals around 12 & 6 pm. 910 675-3100
Gateway Community Church POD		910-604-0071	Gateway Baptist Church, 416 W. Bridgers St., Burgaw	OPEN 11am-5pm Monday-Saturday We will be shutting down our recovery efforts Friday Oct. 5 .
Station 14 (RED CROSS SERVING EVENING MEALS starting 5:30pm)	Scott Sills	910-367-6336	19470 US Hwy 17, Hampstead, NC	CLOSED
County Point of Distribution (FOOD, WATER, TARPS)				
Atkinson POD	Jason Turner	910-231-4129	Atkinson Baptist Church Atkinson, NC 28421	Open. Have food water and Ice.
Station 29 POD	On Duty Lieutenant	910-470-7702	Station 29 4849 US HWY 421 Currie, NC 28436	CLOSED
Station 23 POD	Allen Wilson	910-789-0292	Station 23 200 Wilmington, NC Surf City, NC 28445	CLOSED
Station 20 POD (TARP ONLY)	Bo Fussell	910-599-2626	Station 20 816 S. Anderson BLVD Topsail Beach, NC 28445	CLOSED
Non-Governmental Organizations Reilef Supplies (FOOD, TOILETRIES, CLEANING SUPPLIES)				
Share the Table	Dawn Ellis	910-616-8897	12395 Hwy 50, Surf City	Advise public to check hours before going
St. Matthew Baptist Church	Jackie Williams	910 789 0457	152 Arlington Ave Rocky Point, NC	SERVING MEALS FROM 1:00PM-3:00PM Call ahead

				910 789 0457
--	--	--	--	--------------